

“TO SCREEN OR NOT TO SCREEN”

N R RHODA
NEONATOLOGIST
GROOTE SCHUUR HOSPITAL

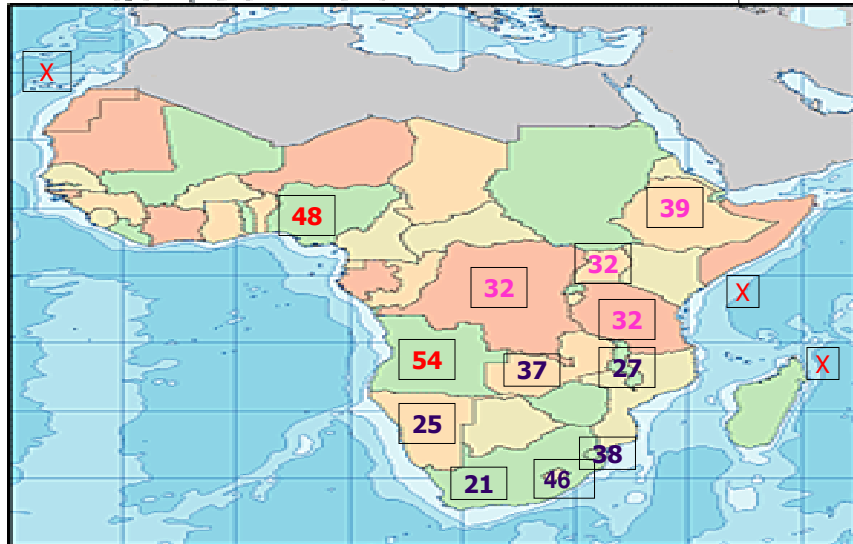


AFRICA

AFRICAN NMR >1000g



AFRIQUE, SUD DU SAHARA



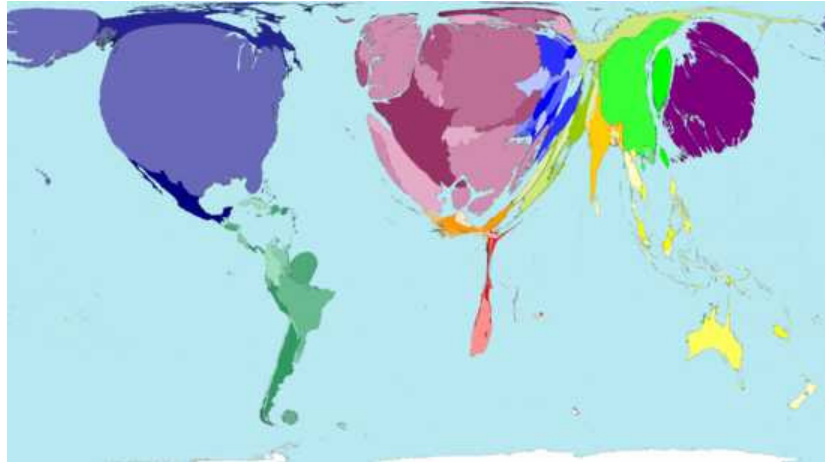
MDG 4

? PROGRESS IN ↓ NMR?



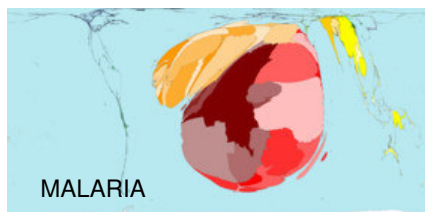
- 1980-2000
 - 30% reduction of child mortality
 - 25% reduction of neonatal deaths
 - **TODAY: Neonatal = 38% of U-5MR**
 - Least effect on the 1st week where 75% deaths occur
- 1996-2005
 - America's 40% reduction
 - Europe and Asia 20% reduction
 - **Africa 5% increase**

GOVERNMENT HEALTH EXPENDITURE



www.worldmapper.org

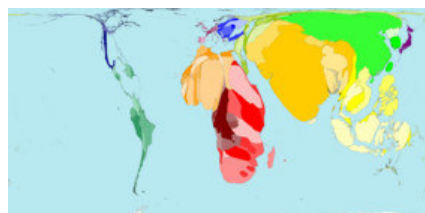
INFECTIONS



MALARIA



HIV



TB

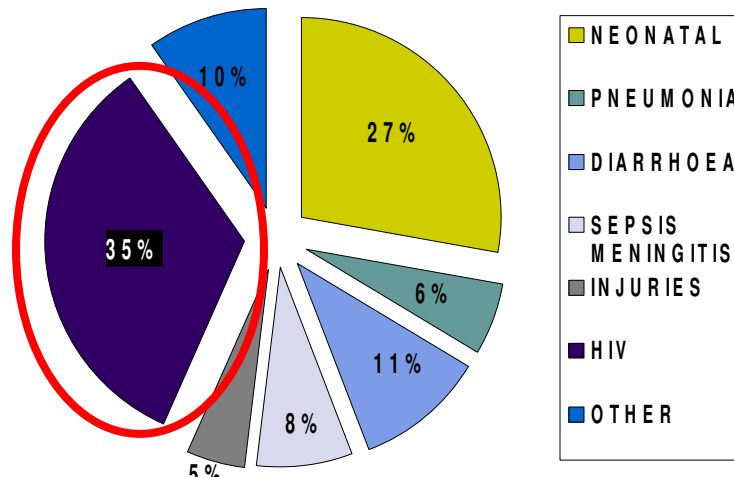


SOUTH AFRICA





DEATHS IN UNDER 5 YEAR OLDS



EVERY DEATH COUNTS REPORT, January 2008

BURDEN OF DISEASE IN RSA



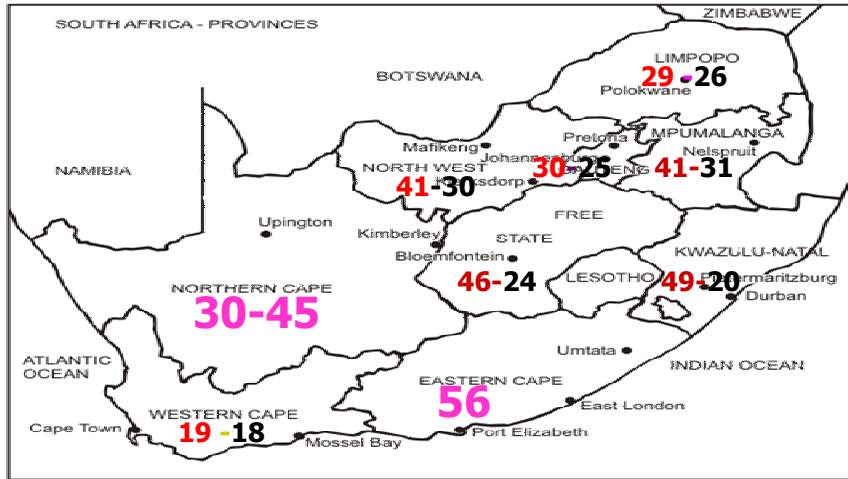
- HIV : >300 000 children living with HIV
- TB increasing esp MDR, XDR, congenital
- Diarrhoeal disease
- 1/3RD of children < 5 die of MALNUTRITION

However,

- Brazil, Mexico and Egypt on track for MDG 4

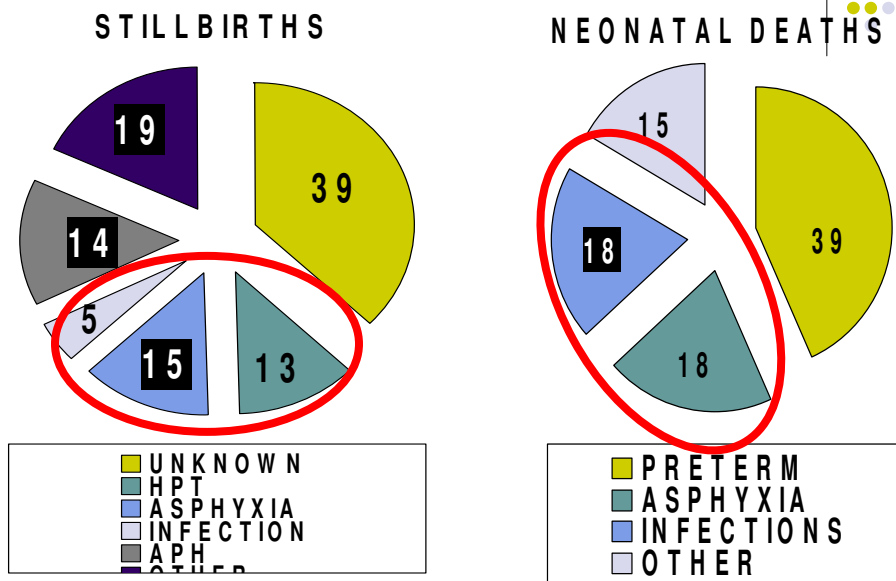


CHANGES IN PNMR (>1000g) 2000 – 2005



Source: Saving Babies 2005, 5th Perinatal Care Survey of South Africa

PERINATAL DEATHS





WESTERN CAPE

PERINATAL DEATHS WESTERN CAPE (2003-2007)



	Total Births	Live Births	FSB	MSB	ENND	LNND
500 - 999	6408	3340	2201	861	1390	159
1000 - 1499	7520	6185	749	586	454	110
1500 - 1999	14450	13355	615	480	231	44
2000 - 2499	32184	31353	506	325	187	20
2500+	271788	270455	890	449	556	39
Total	332350	324688	4961	2701	2818	372

PIIP REPORT ,2008, Dr Greenfield, Provincial Specialist

PNMR



	2003	2004	2005	2006	2007	Total	RSA
All	30.4	33.1	31.4	33.8	36.9	33.1	39.8
All > 999g	18.0	19.2	18.0	19.8	22.0	19.4	27.2
500 - 999	697.1	706.5	704.0	770.6	780.0	732.4	797.8
1000 - 1499	244.0	251.0	231.7	257.3	293.1	254.3	342.9
1500 - 1999	64.4	98.4	105.5	103.7	129.1	97.4	161.8
2000 - 2499	35.6	32.9	28.3	31.2	35.7	32.4	49.4
2500+	5.7	7.2	6.8	7.9	7.9	7.2	10.4

PIIP REPORT ,2008, Dr Greenfield, Provincial Specialist

ENNDR



	2003	2004	2005	2006	2007	Total	RSA
All	8.6	8.8	8.0	8.9	9.4	8.7	11.2
All > 999g	4.3	4.8	4.0	4.6	4.6	4.4	5.9
500 - 999	421.3	377.4	391.8	473.5	497.2	429.4	532.5
1000 - 1499	76.8	69.4	68.0	73.5	82.2	73.5	130.8
1500 - 1999	15.0	20.8	14.6	19.4	21.5	17.9	33.7
2000 - 2499	7.4	5.8	5.4	4.9	6.4	5.8	8.3
2500+	1.4	2.5	1.9	2.4	2.0	2.1	3.3

PIIP REPORT ,2008, Dr Greenfield, Provincial Specialist

FINAL CAUSE OF DEATH

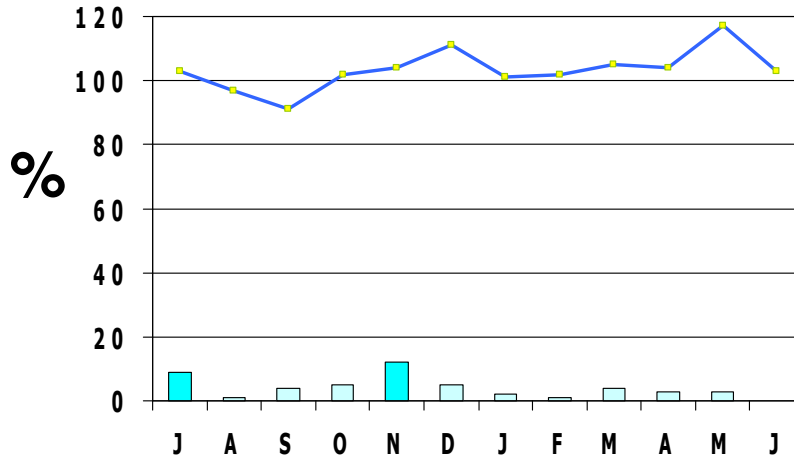


1. IMMATURITY
2. PERINATAL HYPOXIA / ASPHYXIA
3. INFECTION
4. CONGENITAL ABNORMALITIES

**GROOTE
SCHUUR
NEONATAL
UNIT**



2007/8 MONTHLY BED OCCUPANCY NEC OUTBREAK



GSH 2009



- 68% Locum staff
- 86 neonates
 - In space for 50
- 130-140% bed occupancy

AVOIDABLE FACTORS

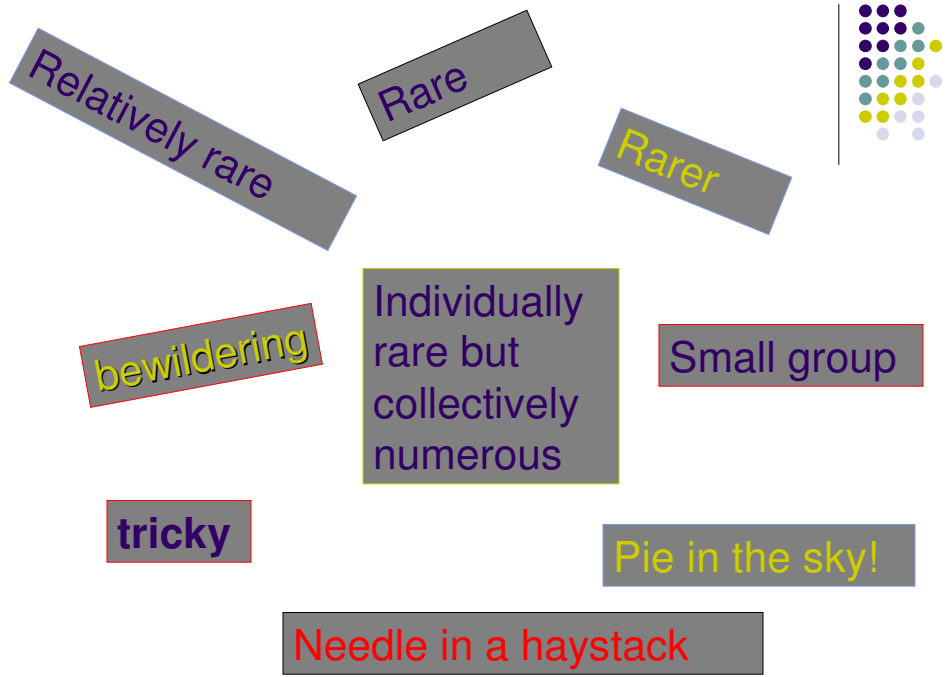


1. Improve antenatal **care and access**
2. Medical and nursing staff **training** in antenatal care, labour and newborn care
3. Ensuring a good **transport service** for mothers and their babies
4. Ensure adequate numbers of competent **staff**
5. Ensure adequate **facilities**

NEWBORN SCREENING

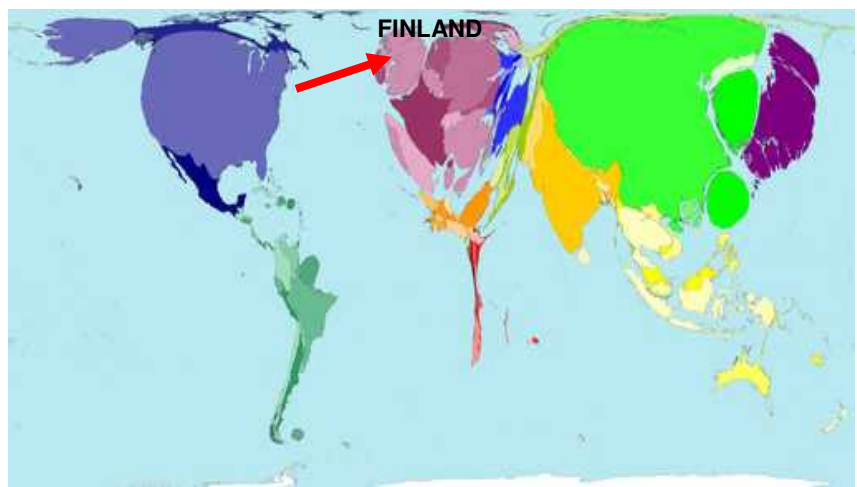
“METABOLIC DISEASE BURDEN”
NEGLIGABLE,
NOT PRIORITY,
WASTE OF TIME,
PIPE DREAM





WORLD WEALTH IN 2015

no change ☹️



www.worldmapper.org

THANK YOU

